

TrueVIS

VG2 Series / SG2 Series
Printer/Cutters

The Roland logo is centered on a dark blue horizontal band. It features the company's signature symbol, a square with three horizontal lines, followed by the word "Roland" in a bold, sans-serif font.The Roland logo is positioned at the bottom of the page. It consists of the company's symbol, a square with three horizontal lines, and the word "Roland" in a bold, sans-serif font.

TrueVIS VG2 Series

TRUE EXCELLENCE

DESIGNED TO EXCEED EXPECTATION

TrueVIS VG2 delivers the power and performance to satisfy the needs of the most demanding print professionals. With the option of Orange ink, the VG2 offers superior colour reproduction and head-turning high-impact graphics plus unsurpassed cutting accuracy. Beat the competition and exceed your customers' expectations with VG2.

Available in:



8 Colours: CMYKcLmLkOr



8 Colours: CMYKLcLmLkWh



4 Colours: Dual CMYK



VG2-640

VG2-540



TrueVIS Printer/Cutters

TrueVIS, the latest generation of Roland DG integrated print & cut technology, is the result of more than 35 years of leading innovation from the number-one print & cut brand in the world, trusted by thousands of daily users around the globe. Multi-award-winning TrueVIS technology is designed to meet the 'real world' needs of print professionals, delivering the widest versatility, highest reliability and truly outstanding quality – all with a same day job turnaround².

TR2 ink



SG2-540

SG2-640

SG2-300

TrueVIS SG2 Series

TRUE PARTNER

THE NEXT STEP TO YOUR SUCCESS

TrueVIS SG2 is the perfect partner for your print room, whether you are just starting out or you are looking to take your business to the next level. Intuitive to operate and equipped with a range of automated features, the SG2 delivers stunning quality graphics across a vast range of applications so you can provide your customers with exactly what they want, when they want it.

Available in:



4 Colours: CMYK



OUTSTANDING COLOUR

New TrueVIS TR2 ink for Vibrant Colour
 In addition to seven colours and White, new award-winning TR2 ink supports Orange ink to further increase the breadth of colour gamut and add real impact and high visibility to graphics. For even richer prints, a new Multi Process Color Function enables Orange ink to be used in all file types as a process colour, or as a spot colour for accurate colour matching.

Enhance your Business with 'True Rich Color'
 The True Rich Color colour management preset takes full advantage of the VG2/SG2's superior colour reproduction capability and the wider colour gamut provided by new TR2 ink. Now vibrant colour can be combined with neutral greys, smooth gradations and natural skin tones to create stunning graphics. This pioneering print quality is unequalled for durable prints.

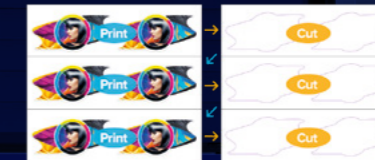


HIGHLY RELIABLE PRINT & CUT PRODUCTION

Automated Long-run Decal/Label Production
 With some other print solutions, when producing stickers, decals and labels, due to media tolerance and the length of the print job, print and cut accuracy can decrease. With the advanced cutting functionality of the VG2/SG2 you are assured consistent, high-precision accuracy, however long the print job.

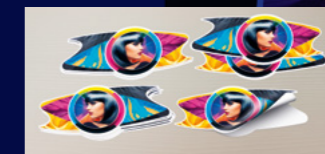


Lengthy Print & Cut Jobs with Crop Marks
 The new multiple cropmark function, with variable options for cropmark registration, means you can choose cropmark frequency based on the length of your print job.



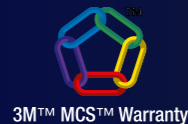
Continuous Print & Cut per Shorter Distances.
 The Custom Page function allows you to separate long production runs into manageable sections and use a Print & Cut automated workflow, even in conjunction with the supported TUC-4 take-up system, for maximum accuracy, minimum waste and faster overall turnaround.

Eliminate Trimming with Perforated Cut
 Speeding up turnaround time, the improved cutting control technology of the VG2/SG2 introduces a precision perforated cut function for producing die-cut, ready-made decals and even custom-shaped labels – without the need to trim.



RELIABILITY, DURABILITY AND SAFETY

The VG2/SG2 with TR2 ink is certified for long lasting results by 3M™ MCS™ Warranty, providing your customers with the assurance of the quality and reliability of their graphics. It is also certified by the Avery Dennison™ ICS™ Performance Guarantee which provides protection for up to 4 years outdoors and up to 7 years indoors³. Graphics produced with TR2 inks are GREENGUARD Gold certified to be safe when used, even in sensitive locations such as schools and hospitals.



3M
 Performance
 Guarantee



PRODUCT
 CERTIFIED FOR
 LOW CHEMICAL
 EMISSIONS:
 UL/COM/GG
 UL 2818

EXCEPTIONAL PERFORMANCE FOR SAME DAY TURNAROUND

Get ahead of the competition - fast drying speeds allow you to print, then laminate in as little as 6 hours² for true same day installation, with the reassurance of quality output and reliable installation.

FlexFire Printhead
 Roland DG FlexFire printheads maximise printing performance so that even the highest speed setting delivers neutral greys, vivid colours and smooth skin tones.



VG2 series (4 heads)

SG2 series (2 heads)



Two Take-Up Modes
 A new take-up unit supports two modes according to the type of media chosen, securing take-up for smooth post-processing.



Nozzle Mask Function
 A nozzle masking function allows you to continue printing in the unlikely event of a nozzle being blocked.



New Media Clamp
 A new media clamp allows sheet cutting without removal.

VersaWorks 6 TO POWER YOUR BUSINESS

The new VersaWorks 6 RIP software is designed to simplify operation while maximising the power of your VG2/SG2 and other Roland DG devices. A Harlequin RIP dual-core engine with support for PDF 2.0 and native 64-bit processing provides accurate rendering of PDFs with shadows and transparencies.

- An icon-based interface with drag-and-drop functionality facilitates ease of use
- Five print queues and the ability to save and store unlimited queue settings
- Special Color Plate Generation lets you auto-generate White ink layers from within the RIP
- Built-in Pantone® and Roland Color spot colour libraries
- Easy printer colour matching for consistent colours.



TrueVIS VG2 Series / SG2 Series

Specifications		VG2-640	VG2-540	SG2-640	SG2-540	SG2-300
Printing method		Piezo ink-jet method				
Media	Width	315 to 1625 mm (12.4 to 64 in.)	275 to 1371 mm (10.8 to 54 in.)	315 to 1625 mm (12.4 to 64 in.)	275 to 1371 mm (10.8 to 54 in.)	182 to 762 mm (7.2 to 30 in.)
	Thickness	Max. 1.0 mm (39 mil) with liner for printing, Max. 0.4 mm (16mil) with liner and 0.22 mm (9 mil) without liner, for cutting				
	Roll outer diameter	Max. 210 mm (8.3 in.)				
	Roll weight	Max. 40 kg (88 lb)	Max. 30 kg (66 lb)	Max. 40 kg (88 lb)	Max. 30 kg (66 lb)	Max. 25 kg (55 lb)
	Core diameter ⁽¹⁾	76.2 mm (3in.) or 50.8 mm (2 in.)				
Printing / cutting width ⁽²⁾		Max. 1600 mm (63 in.)	Max. 1346 mm (53 in.)	Max. 1600 mm (63 in.)	Max. 1346 mm (53 in.)	Max. 736 mm (29 in.)
Ink	Type	TrueVIS INK TR2 500 cc pouch (white only 250 cc)				
	Colours	Eight colours (Cyan, Magenta, Yellow, Black, Light Cyan, Light Magenta, Light Black and White) / Eight colours (Cyan, Magenta, Yellow, Black, Light Cyan, Light Magenta, Light Black and Orange) / Four colours (Cyan, Magenta, Yellow and Black)		Four colours (Cyan, Magenta, Yellow and Black)		
Printing resolution (dots per inch)		Max. 1200 dpi				
Cutting speed		10 to 300 mm/s (0.4 to 11.8 in./s)				
Blade force ⁽³⁾		30 to 500 gf				
Blade	Type	Roland CAMM-1 series blade				
	Offset	0.000 to 1.500 mm (0.0 to 59.1 mil)				
Power-saving function		Automatic sleep feature				
Software resolution (when cutting)		0.025 mm/step (0.98 mil/step)				
Distance accuracy (when printing) ⁽⁴⁾⁽⁵⁾		Error of less than ±0.3% of distance travelled or ±0.3 mm (±11.8 mil), whichever is greater				
Distance accuracy (when cutting) ⁽⁴⁾		Error of less than ±0.4% of distance travelled or ±0.3 mm (±11.8 mil), whichever is greater. When distance correction has been performed (when the setting for [CUTTING MENU] - [CALIBRATION] has been made): Error of less than ±0.2% of distance travelled or ±0.1 mm (±3.9 mil), whichever is greater.				
Repeatability (when cutting) ⁽⁴⁾⁽⁶⁾		±0.1 mm (±3.9 mil) or less				
Alignment accuracy for printing and cutting ⁽⁴⁾⁽⁷⁾		±0.5 mm (±19.7 mil) or less				
Alignment accuracy for printing and cutting when reloading media ⁽⁴⁾⁽⁸⁾		Error of less than ±0.5% of distance travelled, or ±3 mm (±0.2 in.), whichever is greater				
Media heating system ⁽⁹⁾		Print heater set temperature: 30 to 45°C (86 to 112°F) Dryer set temperature: 30 to 50°C (86 to 122°F)				
Connectivity		Ethernet (100BASE-TX/1000BASE-T, automatic switching)				
Power-saving function		Automatic sleep feature				
Power requirements		AC 100 to 120 V ±10%, 8.0 A, 50/60 Hz or AC 220 to 240 V ±10%, 4.1 A, 50/60 Hz				AC 100 to 120 V ±10%, 5.4 A, 50/60 Hz or AC 220 to 240 V ±10%, 2.7 A, 50/60 Hz
Power consumption	During operation	Approx. 1090 W				
	Sleep mode	Approx. 40 W				
Acoustic noise level	During operation	63 dB (A) or less				
	During standby	53 dB (A) or less				
Dimensions (with stand)		2945 (W) × 730 (D) × 1310 (H) mm (116 × 28.8 × 51.6 in.)	2685 (W) × 730 (D) × 1310 (H) mm (105.8 × 28.8 × 51.6 in.)	2945 (W) × 730 (D) × 1310 (H) mm (116 × 28.8 × 51.6 in.)	2685 (W) × 730 (D) × 1310 (H) mm (105.8 × 28.8 × 51.6 in.)	2070 (W) × 730 (D) × 1310 (H) mm (81.5 × 28.8 × 51.6 in.)
Weight (with stand)		204 kg (451.9 lb.)	188 kg (412 lb.)	197 kg (434 lb.)	180 kg (397 lb.)	147 kg (324 lb.)
Environment	Power on	Temperature: 20 to 32°C (68 to 90°F), humidity: 35 to 80%RH (no condensation)				
	Power off	Temperature: 5 to 40°C (41 to 104°F), humidity: 20 to 80%RH (no condensation)				
Included items		VersaWorks 6 RIP Software, exclusive stands, power cable, media clamps, media holders, replacement blade for separating knife, manuals etc.				

Specifications, designs and dimensions listed may be subject to change without notice.

¹ The media holders of this machine are designed to be used exclusively with media that has a paper tube (core) with an inner diameter of 76.2 mm (3 in.). To use 50.8 mm (2 in.) media, the optional media flanges are required.
² The length of printing or cutting is subject to the limitations of the program. ³ 500 gf is the maximum instantaneous blade force. The blade force must be adjusted according to details such as the media thickness. ⁴ Media type: Media specified by Roland DG Corporation. Temperature: 25°C (77°F), humidity: 50%RH. Roll media must be loaded correctly. Applicable when all pinch rollers that can be used with the media width are used. Side margins: 25 mm (1.0 in.) or more for both the left and right margins. Excluding expansion/contraction of the media. Not assured when the print heater or dryer is used. Assumes all correction and adjustment functions of the machine have been used properly. ⁵ Print travel: 1 m (39.4 in.) ⁶ [PREFEED] menu item must be set to "ENABLE." Range for assured repetition accuracy. For media with a width exceeding 610 mm (24 in.): Length: 4000 mm (157.5 in.). For media with a width of 610 mm (24.0 in.) or less: Length: 8000 mm (315 in.) ⁷ Provided that the media feed length is 3000 mm (118.1 in.) or less. Excludes the effects of slanted movement and of expansion and contraction of the media. ⁸ Data size: 1625 mm model: 1000 mm (39.4 in.) in the media-feed direction, 1600 mm (63 in.) in the carriage-movement direction, 1371 mm model: 1000 mm (39.4 in.) in the media-feed direction, 1346 mm (53.0 in.) in the carriage-movement direction. No lamination. Automatic detection of crop marks at 4 points when media is reloaded. During cutting, [PREFEED] menu item must be set to "ENABLE." Excluding possible shift caused by expansion/contraction of the media and/or by reloading the media. ⁹ Warm-up is required after power up. This may require 5 to 20 minutes, depending on the operating environment. Depending on the ambient temperature and media width, the preset temperature may fail to be reached.

VersaWorks 6 System Requirements	
Operating system	Windows® 10 (32/64-bit), Windows® 8.1 (32/64-bit), Windows® 7 Professional / Ultimate (32/64-bit)
CPU	Intel® Core™ 2 Duo, 2.0 GHz or faster recommended
RAM	2 GB or more recommended
Video card and monitor	A resolution of 1280 x 1024 or more recommended
Free disk space (HDD/SSD)	40 GB or more recommended
Hard-disk file system	NTFS format
Optical drive	DVD-ROM drive
Other	Internet connection recommended

Options		Model	Description
TrueVIS INK		TR2-CY	Cyan, 500 cc
		TR2-MG	Magenta, 500 cc
		TR2-YE	Yellow, 500 cc
		TR2-BK	Black, 500 cc
		TR2-LC	Light Cyan, 500 cc
		TR2-LM	Light Magenta, 500 cc
		TR2-LK	Light Black, 500 cc
		TR2-OR	Orange, 500 cc
Cleaning liquid		TR2-WH	White, 250 cc
		ZEC-CL	Cleaning liquid, 500 cc
Blades		ZEC-U5032	For standard sign vinyl, 2pcs.
		ZEC-U5025	For standard sign vinyl, reflective and fluorescent / thick media, 5pcs.
Blade holders		XD-CH2	Adjustable blade holder - aluminium
		XD-CH3	Adjustable blade holder - resin

Options	
Automated Take-Up System	
	TU4-64 [For VG2-640, SG2-640] TU4-54 [For VG2-540, SG2-540] TU4-30 [For SG2-300] Rolls up to 40 kg (88.2 lb.)
Heater and Blower	
	DU2-64 [for VG2-640] Power requirements AC 100 to 120 V ±10%, 5.5 A, 50/60 Hz AC 220 to 240 V ±10%, 3 A, 50/60 Hz DU2-54 [VG2-540] Power requirements AC 100 to 120 V ±10%, 5 A, 50/60 Hz AC 220 to 240 V ±10%, 2.6 A, 50/60 Hz

It is recommended to use heater and blower especially for printing with White.

About White Ink Due to the nature of white ink, the pigment in this ink can settle in the cartridge and ink flow system, requiring you to shake the cartridge before each use. Outdoor durability is three years for CMYK.LmLkOr inks, depending on the media used.

Notes from inside pages
¹ More than 129,000 inkjet printer/cutter devices shipped from the Company as of December 2018.
² Tests performed by Avery Dennison™ on MPI Range digital media. When using this media, prints produced with TR2 ink can be laminated after a 6-hour period when rolls or images are properly ventilated and loosely wound. For more detail see: <https://www.graphics.averydennison.com/en/home/services/warranty.html>. Regional differences may occur. Please check with your local agent.
³ 3M™ MCS™ Warranty currently applies to CMYK.LmLk. Warranty excludes Orange and White ink. Warranty for Orange ink is under evaluation. Users of 8c configuration can select 7c for full conformity. Avery Dennison™ ICS™ Performance Guarantee currently applies to CMYK.LmLk and White. Orange ink is currently excluded. Users of 8c configuration can select 7c for full conformity. SG2 is available in CMYK configuration only.

Roland DG reserves the right to make changes in specifications, materials or accessories without notice. Actual output may vary. For optimum output quality, periodic maintenance to critical components may be required. Please contact your Roland DG dealer for details. No guarantee or warranty is implied other than expressly stated. Roland DG shall not be liable for any incidental or consequential damages, whether foreseeable or not, caused by defects in such products. PANTONE® is the property of Pantone LLC. All other trademarks are the property of their respective owners. Reproduction or use of copyrighted material is governed by local, national, and international laws. Customers are responsible for observing all applicable laws and are liable for any infringement. Roland DG Corporation has licensed the MMP technology from the TPL Group.



AUTHORISED DEALER:

SELECT IMAGES BY:

