

SF-200

Desktop Flatbed Printer

**THE WORLD'S FIRST DESKTOP
FLATBED ECO-SOLVENT PRINTER
FOR SENSITIVE APPLICATIONS**



 **Roland**

SF-200

FLATBED ECO-SOLVENT PRINTER FOR SENSITIVE APPLICATIONS

The SF-200 desktop flatbed printer is ideal for full-colour, digital printing on a wide range of sensitive applications. Print high-quality images, with excellent durability and increased health safety, onto a single object or several items at once.

- Suitable for highly specific print requirements for materials such as ABS, PVC, TPU, PET, PP, PPMA, wood, aluminium, glass and leather¹.
- Accommodates objects and media up to 538mm (w) x 360mm (l) and up to 100mm in height.
- Highly durable inks that meet the EN 71-3 standard for toy safety².
- Optional base unit which allows use in retail environments and ensures faster drying and degassing times.



Children's Toys

The SF-200 is designed with children's safety in mind. Working with toy manufacturers, the inks used with SF-200 have achieved the EN 71-3 toy safety standard, an addition to the Toy Safety Directive². This allows for detailed, personalised printing onto toys made of a wide variety of plastics, wood, leather and more. The standard also governs durability – giving peace of mind that toys customised with SF-200 will withstand the roughest of handling.



Food Containers

Customise food containers with creative or corporate designs on the SF-200. Manufacturers can produce decorated products of various shapes and sizes for wholesale. Retailers can offer personalised lunchboxes, drinking bottles, sports equipment and more.



Medical Devices and Instruments

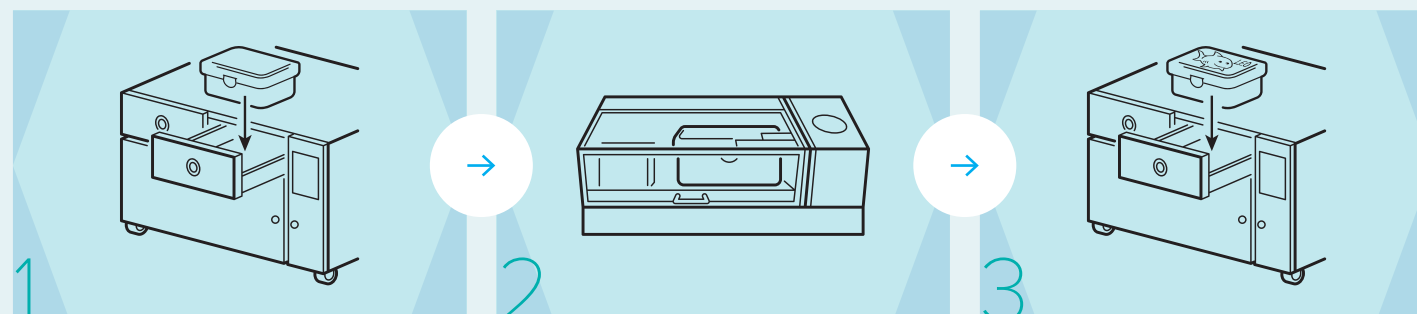
In the medical sector, the SF-200 is ideal for customised or general printing onto labels, plastic devices and aluminium instruments, even those which are in direct contact with human skin and used in health-sensitive environments.



Health and Personal Hygiene Items

Businesses in the personal hygiene and health market can differentiate themselves from competitors by adding customisation and decoration to products such as toothbrushes, thermometers, glasses frames and cosmetics packaging, using the SF-200 printer. For both manufacturers and retailers, this is a key growth opportunity as customers demand more unique products.

Printing is quick, clean and safe with the SF-200³



1 Place item / media in base unit to pre-treat

2 Print

3 Post-treatment of item / media

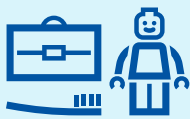
Pre-treatment and post-treatment of the item / media is required depending on the application.

cotodesign

Compatible with cotodesign software

When combined with cotodesign, Roland's latest design and print management software, the SF-200 becomes a complete design-order-print solution for the in-store customisation of gift items using customers' data, such as photos or artwork, from their smartphone. cotodesign also supports additional Roland DG devices⁴, allowing businesses to use it for a wide variety of applications and events.

KEY BENEFITS



Print precise, vivid, full-colour images on a range of clear and coloured objects and media.



The SF-200's highly durable INKU SF inks are tested to meet the requirements of EN 71-3 standard².



VersaWorks

The SF-200 includes Roland's user-friendly VersaWorks 6 RIP software, developed to make your printing operation quick and easy.



An optional base unit is available, featuring spacious heated drawers for pre- and post-treatment if required, enabling use in retail and office environments.

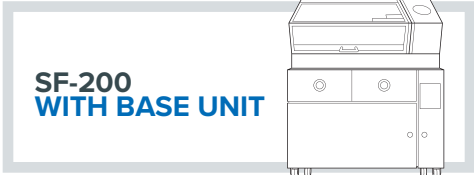
| Specifications | | |
|--------------------------------------|------------------|--|
| Printing method | | Piezo ink-jet method |
| Media/object | Width | Max. 538 mm (21.2 in.) |
| | Length | Max. 360 mm (14.2 in.) |
| | Thickness | Max. 100 mm (3.94 in.) |
| | Weight | Max. 5 kg (11 lb.) |
| Printing width / printing length | | Max. 508 (W) x 330 (L) mm (20 x 13 in.) |
| Ink | Type | Ink specified by Roland DG Corporation |
| | Colour | Five colours (Cyan, Magenta, Yellow, Black and White, 220 cc) |
| Printing resolution (dots per inch) | | Max. 1440 dpi |
| Distance accuracy (*1) | | Error of less than ± 0.3 % of distance travelled or ± 0.3 mm (± 11.8 mil), whichever is greater |
| Connectivity | | Ethernet (10BASE-T/100BASE-TX, automatic switching) |
| Power-saving fuctions | | Automatic sleep feature |
| Power requirements | | AC 100 to 240 V ± 10%, 1A, 50/60 Hz |
| Power consumption | During operation | Approx. 81 W |
| | Sleep mode | Approx. 13 W |
| Acoustic noise level | During operation | 60 dB (A) or less |
| | During standby | 49 dB (A) or less |
| Other dimensions | | 1202 mm (w) x 962 mm (d) x 549 mm (h) (47.3 x 37.9 x 21.6 in.) |
| Weight | | 110 kg (242.5 lb.) |
| Environment | During operation | Temperature: 20 to 32°C (68 to 90°F), Humidity: 35 to 80%RH (no condensation) |
| | Power off | Temperature: 5 to 40°C (41 to 104°F), Humidity: 20 to 80%RH (no condensation) |
| Included items | | VersaWorks 6 RIP software, power cable, cleaning liquid, drain bottle, user manual etc. |

*1 Temperature: 25°C (77°F), Humidity: 50% RH

Specifications, designs and dimensions listed may be subject to change without notice.

| Optional SF-200 Base Unit | |
|------------------------------|--|
| Airflow | 100 - 200 m³/h |
| Combined filter | Gas / HEPA filter |
| Controls | Power on/off / 2 x PID temperature controllers |
| Monitoring | VOC. Filter Change Indicator |
| Electronic supply | 240V |
| Frequency | 50/60 Hz |
| Full load current | 10A |
| Estimated weight | 180 - 200 kg |
| Heated drawer dimensions | 397 mm (w) x 617 mm (d) x 102 mm (h) |
| Overall dimensions | 1210 mm (w) x 1023 mm (d) including spigot 995 mm / excluding spigot x 712 mm (h), 740 mm including top spigot |
| Lockable / levelling castors | x 4 |

Specifications, designs and dimensions listed may be subject to change without notice.



¹ Special printing workflow is required for some of the materials.
² Certification of the printed product is not guaranteed. It is the responsibility of the user printing the product to gain any certifications required and to bear the cost of any certification process. The toy manufacturer is responsible for compliance with legal requirements with toys.
³ Print process may be specific to each application.
⁴ cotodesign is compatible with VersaUV LEF/LEF2 series, VersaSTUDIO BT-12/BN-20, CAMM-1 GS-24, METAZA MPX-90/95, SF-200 and LD-80.

| Roland Care Warranty | |
|----------------------|--|
| | Enjoy the peace of mind of having one of the most comprehensive warranty packages in the industry, included with the SF-200. |

About White Ink. Due to the nature of white ink, the pigment may settle in the cartridge and ink flow system, requiring you to shake the cartridge before each use.

Roland DG reserves the right to make changes in specifications, materials or accessories without notice. Actual output may vary. For optimum output quality, periodic maintenance to critical components may be required. Please contact your Roland DG dealer for details. No guarantee or warranty is implied other than expressly stated. Roland DG shall not be liable for any incidental or consequential damages, whether foreseeable or not, caused by defects in such products. PANTONE® is the property of Pantone LLC. All other trademarks are the property of their respective owners. Reproduction or use of copyrighted material is governed by local, national, and international laws. Customers are responsible for observing all applicable laws and are liable for any infringement. Roland DG Corporation has licensed the MMP technology from the TPL Group.