



GRAFITYP
selfadhesive products

MANUAL 11



FURNITURE WRAPPING

June 2019

Grafityp Automotive & Deco Films are extremely suited for renewing your existing furniture.

In this manual you will find a couple of possibilities of how this work can be done.

By using the right techniques, an old table or door will be up-to-date again in no time.

This manual is a paper version of the instruction videos that you can find on the Grafityp website www.grafityp.com.

CONTENT of this manual

1. Tables with right corners.
Link to instruction video:
2. Tables with rounded corners.
Link to instruction video:
3. Round table tops.
Link to instruction video:
4. Kitchen doors.
Link to instruction video:
5. Furniture panels with relief.
Link to instruction video:
6. Doorposts and doors.
Link to instruction video:

1. TABLES WITH RIGHT CORNERS

Preparation



Clean the table with Isopropanol.



Do not forget the vertical edges.



Also clean the table with a surface cleaner.



You also need a heatgun, knife, soft squeegee and a meter.

Positioning the film.



The film has to be 10 cm oversized.



Pull away the backing paper.

Applying the film.

Rub the film from the center to the outside with your squeegee.



Accentuate the edges with your finger



1. Wrapping the edges with overlap.



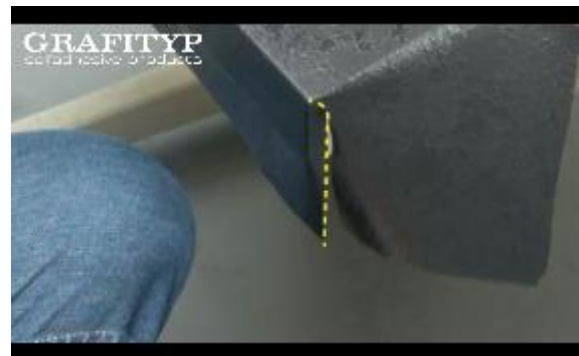
Rub one side from top to bottom.



Rub the film 0.5cm around the corner..



Start cutting at the top of the edge.



Rub around the corner.



Start rubbing the other side now



Use the edge as a guide line to cut away the rest of the film.

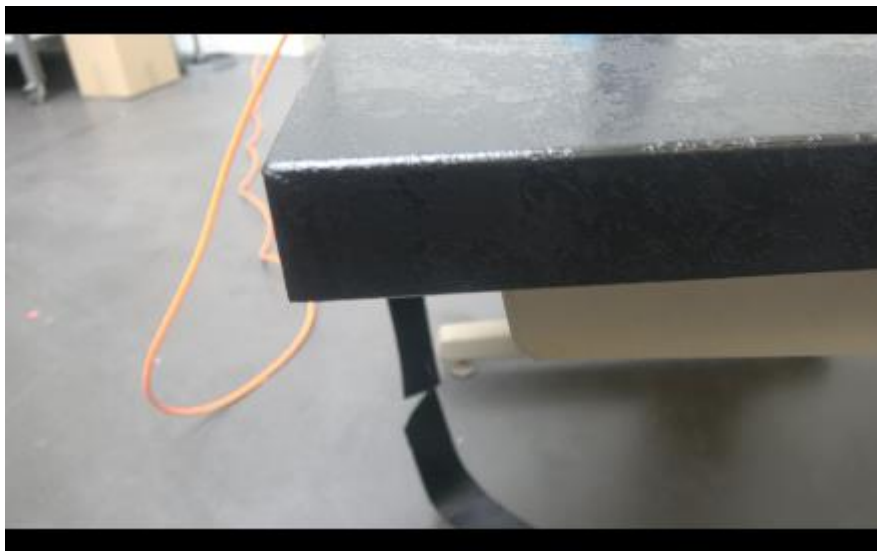


of the the table.

Cut away the excessive film towards the edge



Heat up the heatgun (350°C Heatgun) and press firmly all edges.



The 3mm overlap is required and will be slightly visible

2. Wrapping the edges without overlap.

ONLY TO BE USED WITH CAST FILMS.



all edges.

The film has to be at least 10 cm oversized at



Pull away the backing paper.



with the squeegee.

Rub the film from the center to the outside



finger and rub the second largest part.

Accentuate the edges with your squeegee or



And then one vertical part of the table.



each other here.

Later the seams will touch



Mark a new line 3 mm under the first one and cut the film there.



So the film is 3 mm oversized now.



Now start rubbing the other side.



bottom edge.

Mark the final cutting line from top edge to



Cut through BOTH films now.



Pull away both pieces of excess



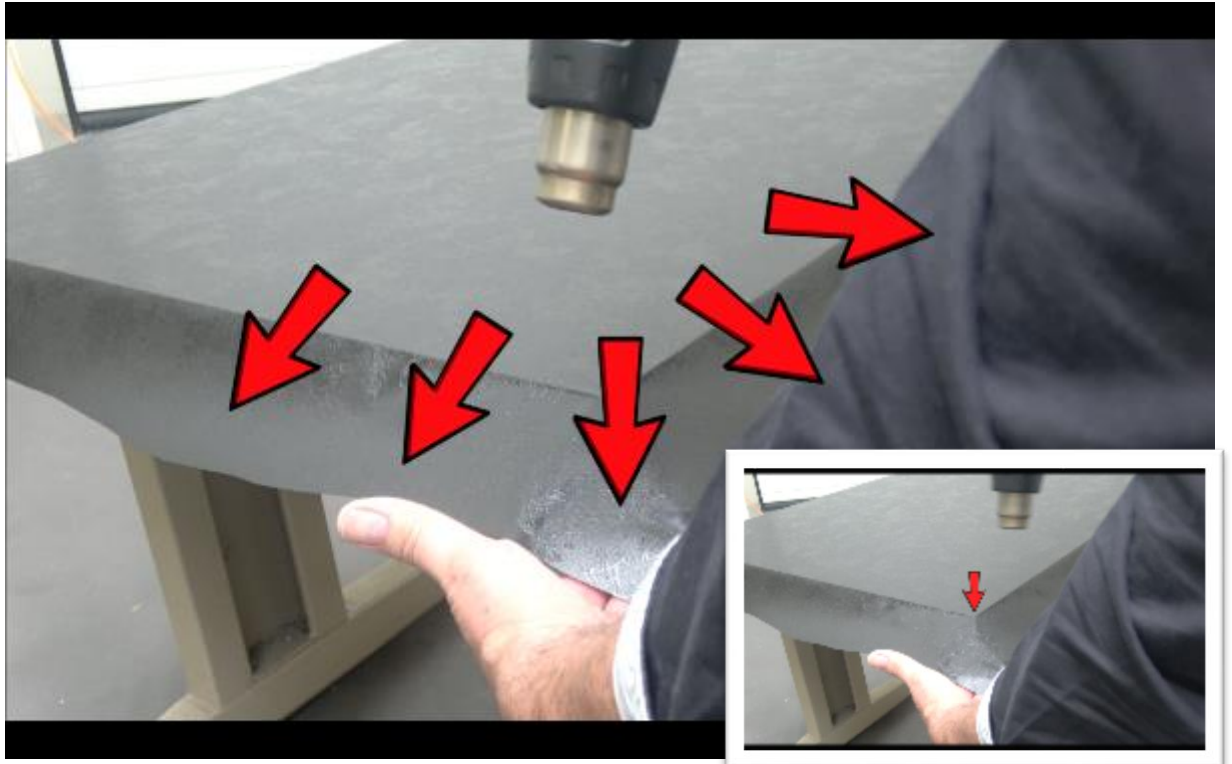
Now rub both pieces together.



Ready and perfectly seamless.

3. Wrapping the edges without cutting the film.

ONLY ADVISED in combination with a well bonding substrate like non structured PVC, metal. ONLY FOR CAST FILMS.



Warm up a large part of the film until it becomes soft and stretchable. Be sure not to overheat the table corner.



Then stretch and pull the film away in all directions of the edge. Stretch the film as little as possible!



Press the film firmly at the edge.



Heat up the rest of the film and apply up to the center of the table edge.

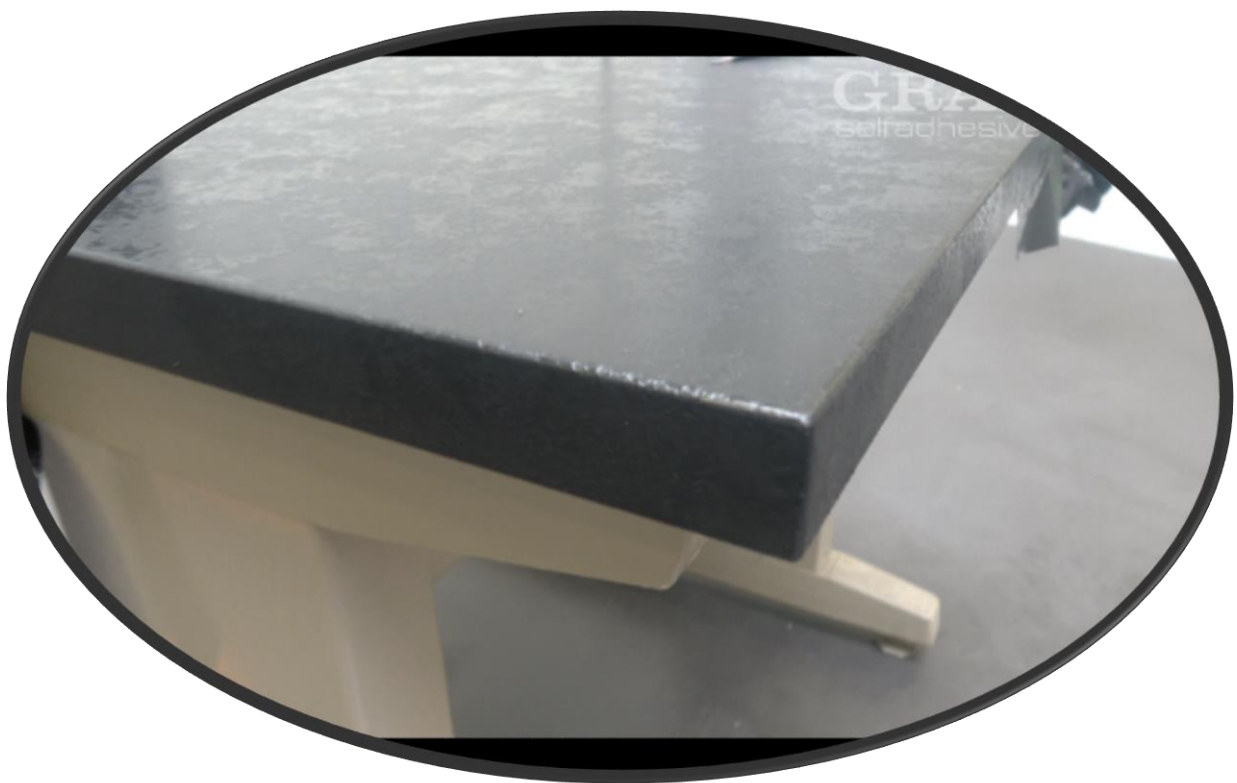




IMPORTANT!!! Pull away the last 1.5 cm of the vinyl once again, so you can get the tension out of it by reheating it. The film will shrink now for some mm. Once the vinyl has cooled down, rub it firmly once again.



Cut away the excess film and heat the film for a last time at the edges.



Perfect result ;o)

MOVIE MANUAL ON www.grafityp.com.

Link:

