

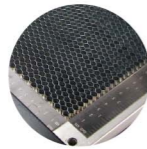


Laser Cutter

Optional Items



SmartGUARD™  
Fire Alarm (Patented)



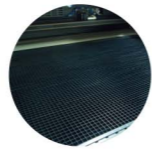
Honeycomb Tables



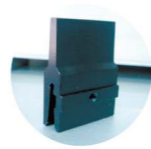
External Control  
Interface Board



Air Extraction  
System



Aluminum Grid  
Cutting Table



Supporting Pin Kit

Specification		X500III			
Model Name		X500III			
Laser Source		80W	100W	130W	150W
Laser Cooling		Sealed CO <sub>2</sub> Laser			
Laser Cooling		Water Cooled			
Working Area	w/o honeycomb table	51 x 36 in. (1300 x 916 mm)			
	with honeycomb table	50.3 x 35.2 in. (1280 x 896 mm)			
Max. Part Size (W x L x H)	w/o Cutting Table	52.9 x 36.0 x 2.1 in. (1346 x 916 x 55 mm)			
	Doors Open	52.9 x ∞ x 1.1 in. ( 1346 x ∞ x 30 mm )			
	With Honeycomb Cutting Table	48.8 x 32.2 x 1.1 in. (1240 x 818 x 30 mm)			
	With Aluminum Cutting Table	52.1 x 35 x 1.1 in. (1325 x 889 x 30 mm)			
Dimensions		74.8 x 55.1 x 47.2 in. (1900 x 1400 x 1200 mm)			
Driver		Closed-loop DC Servo Control			
Maximum Cutting Speed*		40 IPS			
Speed Control		Adjustable from 0.1~100% ( Up to 16 color-linked speed settings per job )			
Power Control		Adjustable from 0~100% ( Up to 16 color-linked speed settings per job )			
Engraving Capability		256-level gray scale image processing capability			
Distance Accuracy		0.254 mm or 0.1% of move, whichever is greater			
Z-Axis Movement		Manual			
Resolution (DPI)		Available 125, 250, 300, 500, 600, 1000			
Computer Interface		10 Base-T Ethernet, Full speed 2.0 USB			
Focus Lens		Standard 2", Optional 3"		Standard 3", Optional 2"	
Display Panel		4-line LCD panel showing current file name, total working time, laser power, engraving speed, file(s) loaded into memory buffer, setup and diagnostic menus.			
Safety		Class I Laser Product Compliant with EN60825 Class II Laser Product Compliant with CDRH 2006/42/EC Machinery Directive Compliance			
Cutting Table		Knife-shaped cutting bars with down vacuum and scrap collecting funnel			
Operation Voltage		200-240VAC, 50/60Hz auto switching, Max.10A			
Air Exhaust System		External exhaust system required to connect to 8-inch opening on machine (Air volume) (free flow 1400 m <sup>3</sup> /h, static pressure 2700 pa)			

\* Speed does not equal to throughput. See dealer or visit [www.GCCworld.com](http://www.GCCworld.com) for more details.  
 Δ Specifications are subject to change without prior notice.

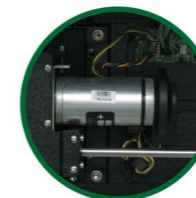
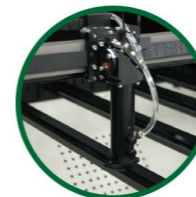
Authorized Dealer



[www.GCCworld.com](http://www.GCCworld.com)

# GCC LaserPro X500III

Professional Cutting Performance at The Best Value



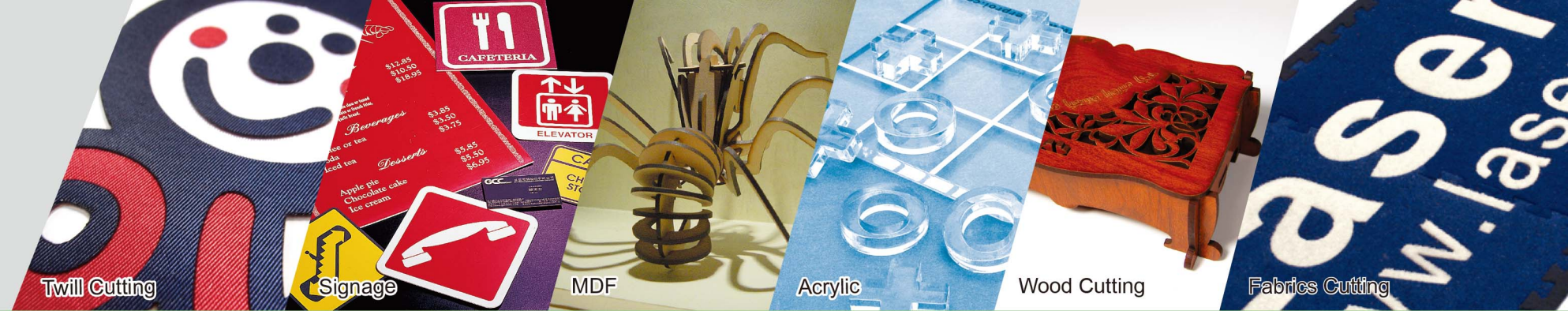
## X500III

- Spacious 51.1 x 36.1 in. (1300 x 916 mm) working area
- DC Servo Motor Technology for precise movement control
- Uniquely innovative user-friendly features
- Fullfill versatile cutting and engraving applications



GCC Headquarters 4F-1., No.236, Fude 2nd Rd., Xizhi Dist., New Taipei City 22151, Taiwan 886-2-6616-6692 Fax : 886-2-2694-6875  
 GCC China No. 1, Chen Feng Road, Yushan, Kunshan, Jiangsu 215300, China 86-512-5726-1515 Fax : 86-512-5726-1518  
 GCC Europe B.V. Eglantierbaan 43-45, 2908 LV, Capelle a/d IJssel, The Netherlands 31-10-458-9367 Fax : 31-10-451-9874  
 GCC America, Inc 20453 E Valley Blvd. Walnut, CA 91789, USA 1-909-718-0248 Fax : 1-909-718-0251  
 US & Canada Only Toll Free: 1-888-284-5211





Twill Cutting

Signage

MDF

Acrylic

Wood Cutting

Fabrics Cutting

## Laser Cutter

# GCC LaserPro X500III



## GCC LaserPro X500III

Embrace the cutting technology from the GCC LaserPro X series designed and engineered for professional use. Packed with several user-friendly features, the GCC LaserPro X500III offers high product performance in terms of both durability and feasibility. The X500III model combines cutting and engraving capabilities to give users a versatile system.

### Intuitive Control Panel Interface

A control panel with coherent hot-key design and graphic icon displays that allows you to directly change the laser parameter setting, set jobs to repeat unlimited times, queue job, delete jobs, and more.



### Closed-loop DC Servo Technology

The X500III utilizes high performance closed-loop DC servo motors for precise and fast carriage movement combined with a reliable motion system to produce exceptionally accurate outputs.

### Knife-shaped Cutting Table

Unique cutting table with tipped bars that can be easily adjusted without tools to create different levels of working depths. The cutting table of X500III reduces laser reflections and delivers clear cutting edge.



### Key Switch & Emergency Stop

Key switch safeguards the machine from unauthorized use. Prominent emergency button located on the top of the machine allows operators to stop the laser and the motion carriage immediately to provide a safe operating environment.

### Supporting Pin Kit

This design can firmly hold up the working object preventing it from falling off; moreover, it can effectively reduce the possibility of the reflected laser hitting the working object.

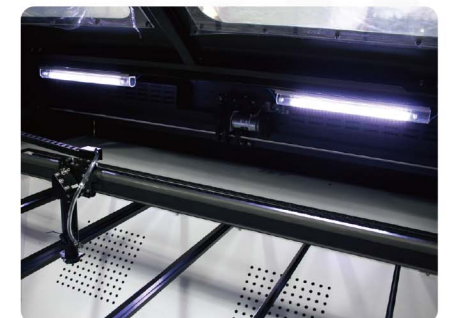


### Drag-N-Play

The "Drag-N-Play" feature greatly reduces complex set up procedures and allows users to directly drag the lens carriage to the starting point of a job.

### SmartLIGHT

Built-in LED light module illuminates the working space and makes every engraving detail easy to see.



### Versatile Cutting & Engraving Capability

X500III delivers high cutting quality with LaserPro's unique laser firing control technology. X500III can cut through 20 mm acrylic in a single pass. Better than that, the grayscale technology allows X500III to process 256-level grayscale image with vivid engraving quality.