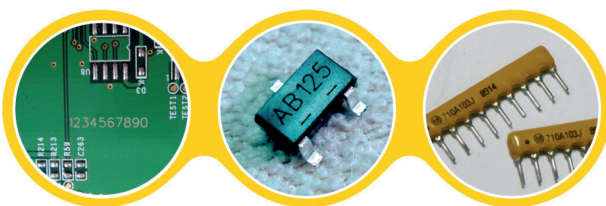
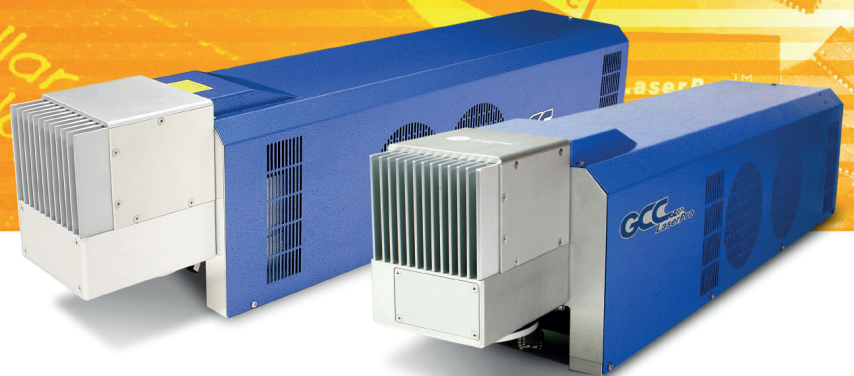


**Leave the Marking to Us
We Know How to Make it Perfect**

Stellar Mark **C** ***series***



- ▶ CO2 powered laser available in 12W / 30W / 60W configurations
- ▶ Mark-on-fly marking at constant or variable speed
- ▶ Indispensable G-Mark Basic software supports 1D, 2D, text, logo marking
- ▶ Variable sizes of working area available from 10 x 10 mm to 300 x 300 mm
- ▶ Permanent marking across a wide range of materials: glass, plastics, anodized aluminum, coated metals, and more
- ▶ I/O interface for start, stop, alarm, Emergency Stop, ready, output and input automation control signals

Superior Text Editing Functions

Automatic Serial Marking

With this feature, users can increase or decrease the serial part number automatically.

LaserPro 00001	LaserPro 00010	LaserPro 10000
LaserPro 00002	LaserPro 00020	LaserPro 20000
LaserPro 00003	LaserPro 00030	LaserPro 30000

Font Marking Variations

This feature enables marking of a variety of character expressions via Arc Alignment, Angle Alignment, and Marking Direction.



Barcode Marking

14 types of 1D and 5 types of 2D barcodes (Data Matrix, PDF417, QR Code and Maxi Code) are available.



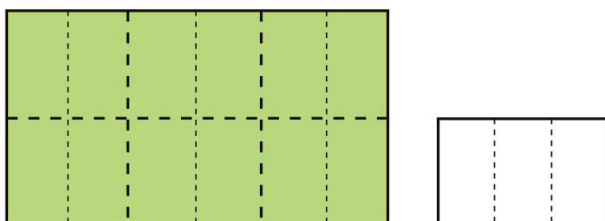
CIIA-Li 12

CIIA 60Ti

CIIA 12

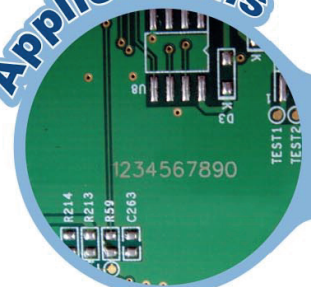
Allow Bigger Working Area for Higher Productivity

StellarMark HS series will allow user to work at bigger working area than other conventional laser and to achieve more productivity.



LaserPro working area vs. Others working area

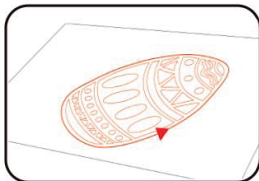
Applications



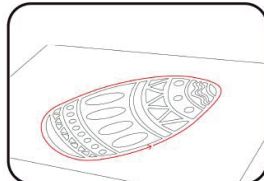
PCB

Preview Mode

Variable-speed, red dot pointer "preview" mode outlines the marking path.



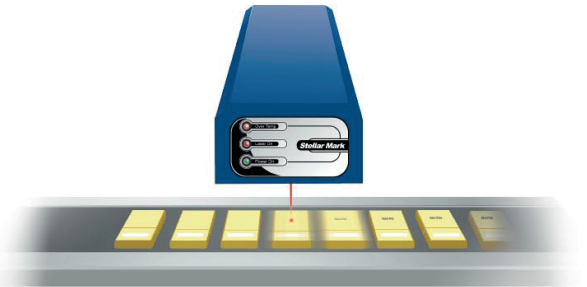
Full Path



Outline Path

Mark on The Fly (Optional)

Non-stop, "on-the-fly" marking of parts maximizes productivity. Precise laser can mark fast-moving parts while the conveyor is at constant or varying speed.



Safety Design and Certification

Emergency Stop



The machine can be entirely shut down by pressing the Emergency Stop button from controller when any emergency occurs.

Key Switch



This safety feature enables operators to keep the laser locked to avoid unauthorized use.

CE Certification



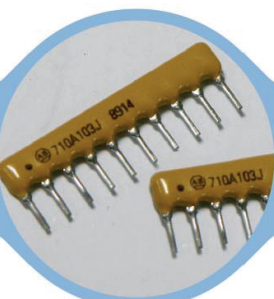
StellarMark complies with the essential safety requirement which set out in the European Directives.

RoHS Compliance

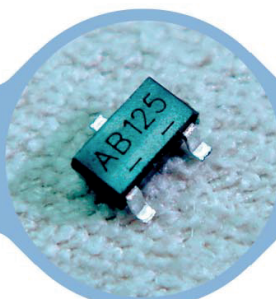


We are committed to make every effort to protect the environment. The StellarMark C-Series is in compliant with the Restriction of Hazardous Substances Directive.

LaserPro StellarMark C series



Capacitors



Passive IC



Carton Boxes



Recordable Media



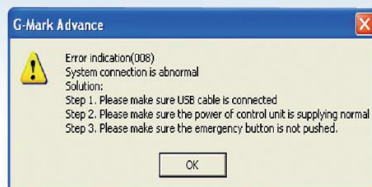
Pharmaceutical Packaging

StellarMark is ideal for industrial applications. Not only are the key components sourced from the world's leading suppliers to ensure output quality and stability, it also has the flexibility for manufacturers to handle complex jobs with our new G-Mark Basic software. It constructively offers smart designs of password protection and error detection to prevent operators from making unnecessary mistakes, and detects problems without delay. StellarMark is built to accomplish all your needs and to achieve a higher level of productivity.

Ultimate Software Functions

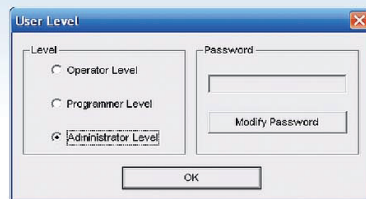
Error Indication

Error messages appear when the laser marker works incorrectly. Operators can be informed by the message and solve the problem immediately.



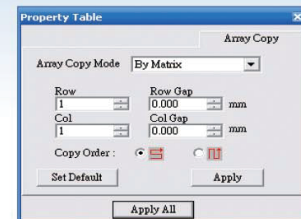
Secure Password

Three-tier password security system (Operator, Programmer, Administrator levels) restricts unauthorized access to the production line.



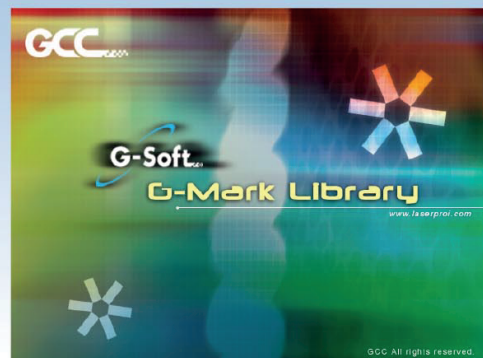
Array copy

Users can create multiple copies of a text or graphic by specifying the number of copies to be replicated and the graphic will be rendered in a matrix format.



G-Mark Library (optional)

This programmable software can be used to customize functions by using VB scripts. All commands are received in real time from a master PC and position offsets, rotating angles and sequential marking can be easily set up.



StellarMark CIIA 12 / CIIA-Li 12 / CIIA 30V

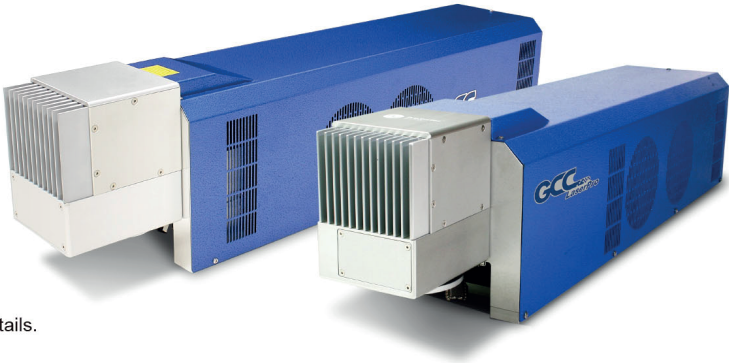
Model No.	CIIA / CIIA-Li 010	CIIA / CIIA-Li 050	CIIA / CIIA-Li 070	CIIA / CIIA-Li 140
Working Area	10 x 10 mm	50 x 50 mm	70 x 70 mm	140 x 140 mm
Spot Size**	0.09 mm	0.12 mm	0.24 mm	0.46 mm
Repeatability**	0.001 mm	0.003 mm	0.004 mm	0.008 mm

StellarMark CIIA 60Ti / 60Ti93

Model No.	CIIA 60Ti / CIIA 60Ti93 070	CIIA 60Ti / CIIA 60Ti93 140	CIIA 60Ti / CIIA 60Ti93 200	CIIA 60Ti / CIIA 60Ti93 300	CIIA 60Ti / CIIA 60Ti93 300 Doublet
Working Area	70 x 70 mm	140 x 140 mm	200 x 200 mm	300 x 300 mm	300 x 300 mm
Spot Size**	0.12 mm	0.24 mm	0.37 mm	0.53 mm	0.48 mm
Repeatability**	0.004 mm	0.008 mm	0.012 mm	0.017 mm	0.017 mm

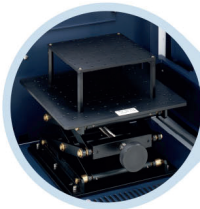
StellarMark CIIA-HSII

Model No.	CIIA-HSII 140
Working Area	140 x 140 mm
Spot Size**	0.23 mm
Repeatability**	0.008 mm



* Speed does not equal to throughput. See dealer or visit www.gccworld.com for more details.
** File transmission at USB 2.0 Full Speed rate.
Specifications are subject to change without prior notice.

Optional Items



Adjustable
Z-Axis Table



Mounting Platform
with Light



Fire Retardant
Safety Shield



Rotary Attachment



Workstation
*Not available on StellarMark C-100 model

StellarMark CIIA 12/CIIA 30V/CIIA 60Ti/CIIA 60Ti93/CIIA-Li/CIIA-HSII Specifications

Model No.		CIIA 12	CIIA-Li 12	CIIA-HSII 12	CIIA 30V	CIIA 60Ti / 60Ti93
Laser Source	Wavelength	10.6 μm				10.6 μm / 9.3 μm
	Type	CO2, sealed-off				
	Output Power	12 W			30 W	60 W
	Cooling	Air-cooled, no water chiller required				
Electrical Requirements	Power Supply	AC Auto Switching 115V / 230V, 50-60 Hz/ single phase				
	Power Consumption	740 W			1240 W	
Dimensions (L x W x H)	Laser head	620 x 200 x 150 mm	285 x 184 x 560 mm	620 x 200 x 150 mm	620 x 200 x 150 mm	880 x 211 x 202 mm
	Control unit	500 x 420 x 192.4 mm				
Laser Marker Weight		15 kg	17.2 kg	15 kg	17 kg	30 kg
Control Unit Weight		17 kg			19 kg	
Max Linear Marking Speed		3,000 mm/s				
Max Marking Speed		10,000 mm/s				
Operating System		Microsoft Windows 2000 / XP / Vista(32/64 Bit) / 7(32/64 Bit) / 8(32/64 Bit) (Desktop or Laptop PCs)				
Environment	Temperature	15°C ~ 35°C				
	Humidity	10 ~ 80% Non condensing				
Safety		Class 4 (EN60825-1 Class 1 available with safety shield and LFC) 2006/42/EC Machinery Directive 2014/35/EU Low Voltage Directive 2014/30/EU Electromagnetic Compatibility Directive				

* All spec are subject to change without any prior notice.

** Material dependent.

△ Specifications are subject to change without prior notice.



Authorized Dealer



GCC Headquarters 4F-1., No.236, Fude 2nd Rd., Xizhi Dist., New Taipei City 22151, Taiwan
 GCC China No.1, Chen Feng Road, Yushan, Kunshan, Jiangsu 215300, China
 GCC Europe B.V. Eglantierbaan 43-45, 2908 LV, Capelle a/d IJssel, The Netherlands
 GCC America, Inc 20453 E Valley Blvd. Walnut, CA 91789, USA

886-2-6616-6692 Fax : 886-2-2694-6875
 86-512-5726-1515 Fax : 86-512-5726-1518
 31-10-458-9367 Fax : 31-10-451-9874
 1-909-718-0248 Fax : 1-909-718-0251
 US & Canada Only Toll Free: 1-888-284-5211

www.GCCworld.com