

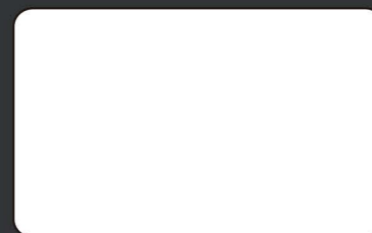
| Specification | | S400 |
|-------------------------------|-------------------------|--|
| Work Area | | 40 x 24 in. (1016 x 610 mm) |
| Max. Part Size (W x L x H) | All doors closed | 41.4 x 25.4 x 11 in. (1053 x 647 x 280 mm) |
| | All door open | 41.4 x ∞ x 11 in. (1053 x ∞ x 280 mm) |
| Table Size | | Standard Grid Cutting Table 40.1 x 24.1 in. (1019 x 613 mm) |
| Dimensions (W x L x H) | | 56.7 x 34.5 x 41.3 in. (1440 x 900 x 1048 mm) |
| Weight | CO ₂ 30W~40W | 260 kg / 573 lb |
| | CO ₂ 60~100W | 270 kg/ 595 lb |
| | Fiber 20W~60W | 260 kg / 573 lb |
| Laser Source | | 10.6-μm CO ₂ laser: 30 to 100W |
| | | 9.3-μm CO ₂ laser: 60W, Fiber Laser:20 to 60W |
| Cooling | | Air-cooled, Operating environment temperature 15°- 30°C (59°- 86°F) |
| Drive | | Closed-loop DC servo control |
| Maximum Motor Speed | | 140 IPS |
| Speed Control | | Adjustable from 0.1~100% (Up to 16 color-linked speed settings per job) |
| Power Control | | Adjustable from 0~100% (Up to 16 color-linked power settings per job) |
| Engraving Capability | | 256-level gray scale image processing capability |
| Distance Accuracy | | 0.254 mm or 0.1% of move, whichever is greater |
| Z-Axis Movement | | Automatic |
| Focus Lens | | CO ₂ : Standard 2.0" (Optional 1.5", 2.5" & 4.0") |
| | | Fiber: Standard 2.0" (Optional 4.0") |
| | | Dual (CO ₂ +Fiber): Standard 2.0" (Optional 3.0" & 4.0") |
| Resolution (DPI) | | Available 125, 250, 300, 380, 500, 600, 760, 1000, 1500 |
| Computer Interface | | 10 Base-T Ethernet USB-A for USB storage USB-B 2.0 for connection |
| Compatible Operating System | | MS Windows 64 Bit |
| Control Panel | | Touch Screen |
| Safety | | Class I Laser Product Complies with EN60825-1:2014, EN ISO 13849-1:2015 Class II Laser Product Complies with CDRH for CO ₂ Laser Class 3R Laser Product Compliant with CDRH for Fiber & Dual Laser sources 2006/42/EC Machinery Directive Compliance Class 4 Laser Product Compliant with CDRH with the optional pass-through door module |
| Operating Voltage | | Below 80Watt, 100-240VAC, 50/60HZ Auto Switching, max. 15A 80Watt and above, 200-240VAC, 50/60HZ Auto Switching, max. 15A |
| Fume Extraction System | | External exhaust system with minimum flow rate 800m3/h (CFM 471 ft3/h) is required, 2.3kPa negative pressure (Pure-Air PA-1500FS @ 4" exhaust port) |

** Speed is not equal to throughput. See dealer or visit www.gccworld.com for more detail.

▲ Specifications are subject to change without prior notice.



Authorized Dealer



www.GCCworld.com



| | | | |
|------------------|--|------------------|---------------------------|
| GCC Headquarters | 4F-1, No.236, Fude 2nd Rd., Xizhi Dist., New Taipei City 22151, Taiwan | 886-2-6616-6692 | Fax : 886-2-2694-6875 |
| GCC China | No.1, Chen Feng Road, Yushan, Kunshan, Jiangsu 215300, China | 86-512-5726-1515 | Fax : 86-512-5726-1518 |
| GCC Europe B.V. | Eglantierbaan 43-45, 2908 LV, Capelle a/d IJssel, The Netherlands | 31-10-458-9367 | Fax : 31-10-451-9874 |
| GCC America, Inc | 20453 E Valley Blvd. Walnut, CA 91789, USA | 1-909-718-0248 | Fax : 1-909-718-0251 |
| | | US & Canada Only | Toll Free: 1-888-284-5211 |

The Flagship Model of The Laser Engraver

Your Best Ever, Beyond Expectation,
Unlimited Laser Machine.



Laser Engraver
S400

- 40" x 24" (1016 mm x 610 mm) extra large working area
- CO₂ and Fiber Hybrid laser option in one laser machine
- High speed 140ips DC servo motor for precise and rapid movement of the laser carriage
- GCC dust protection technology and SmartLID™ make maintenance a lot easier
- QSM (Quality Speed Mode) maintains 100% engraving quality while operating at maximum speed
- Patented SmartACT™ motion control technology increases your productivity by reducing ramping process and job running time
- Drag and engrave feature assures remarkably easy and fast set-ups
- LED light modules illuminate the working area
- Pass-through front and rear doors to accommodate long working pieces (Optional)



GCC LaserPro S400



Laser Engraver GCC LaserPro S400

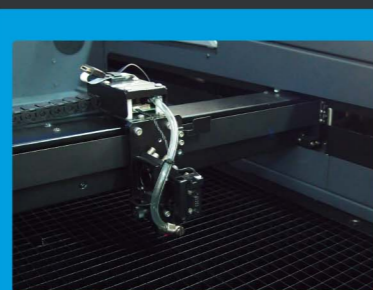
Inherit all the advantages from Spirit Hybrid, a brand new machine – S400 features 140ips processing speed by DC servo motor, innovative touch panel, user friendly interface and a modern good looking design. Together with SmartLID™ easy access, dust protection, S400 presents you the highest throughput and precise laser quality. GCC S400 makes all your imaginations to life at the speed of light.

Features



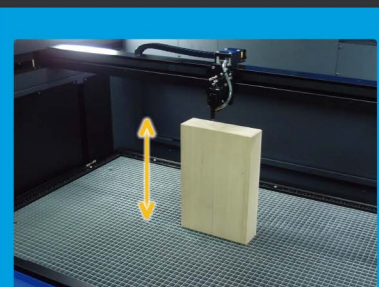
Perfect Cutting and Engraving Throughput

Maximum 140ips processing speed with powerful DC servo motor to boost productivity while maintaining precision.



Dust Protection

Reduce the dust into the machine and gantry during processing with protection design.



Higher Working Depth

Depth of Z-axis up to 11" (280 mm).



Intuitive Touch Screen

Operation is easy and intuitive with the 4" touchscreen.



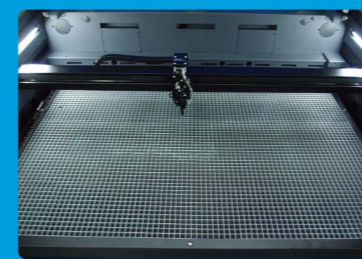
SmartLID™ Easy Access

Easy access design simplifies the maintenance job.



SmartACT™ (Patented)

Ground-breaking technology that reduces the ramping process and the job running time, which translates into higher productivity.



SmartLIGHT

Built-in LED light module illuminates the working space and makes every engraving detail easy to see.



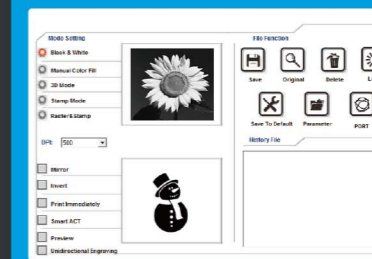
Pass-through Front & Rear Doors (Optional)

Convenient front and rear door open design enables loading of extremely long working pieces with ease and extends business flexibility.



New Airflow Design

All new airflow design provides the best vacuum effect.



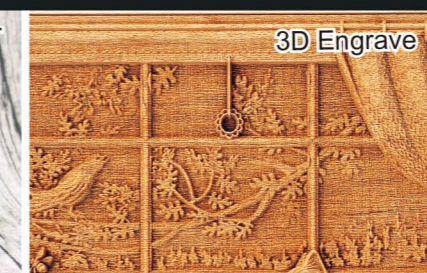
User Friendly Driver Interface

Starting from end users' view, GCC driver evolves into a brand new design with the intuitive interface to favor each user.

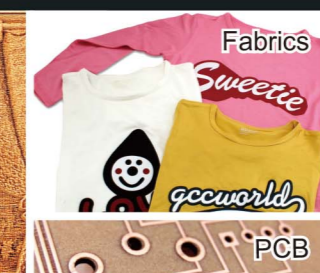
GCC LaserPro S400 Application



Paper



3D Engrave



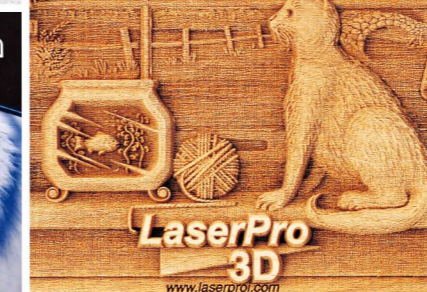
Fabrics



Leather & Metal



Anodized Aluminum



LaserPro 3D



PCB



Acrylic