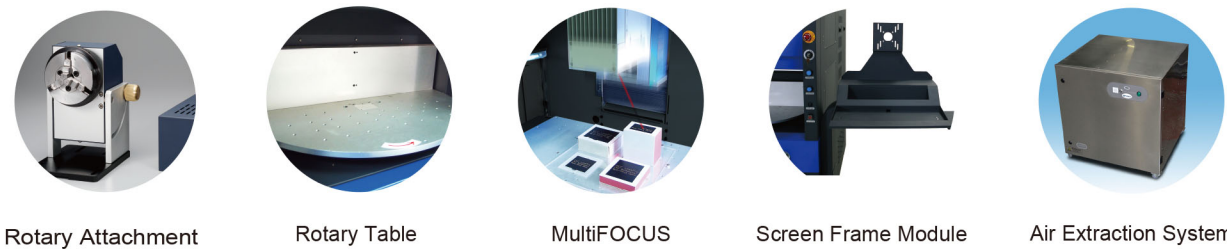


Optional Items



Specification		LFC II Workstation
Model		LFC II
Available Laser Marker		CIIA / CIIP / CIIS / IFII / IFIIS Series
Scan Lens	CO2	70 x 70 mm, 140 x 140 mm, 200 x 200 mm, 300 x 300 mm
	Fiber	70 x 70 mm, 110 x 110 mm, 180 x 180 mm
Working Table Size		700 x 400 mm
Front Door		Automatic door
Max. Loading		50 kg
Z-axis Travel		385 mm
Safety Class		Class 1 (EN60825-1)
Software		G-Mark Basic / G-Mark Library
Operating System		Microsoft Windows XP / Vista(32/64 bit) / 7(32/64 bit) / 8(32/64 bit) (Desktop or Laptop PCs)
Interface		USB x 1, VGA x 1
Power Supply		AC Auto Switching 110 - 240 VAC, 50-60Hz / Single Phase
Power Sonsumption		1650W
Operating Temperature		15°C ~35°C
Operating Humidity		10 ~ 80% Non condensing
Dimension		1585 (L) x 852 (W) x 1745 (H)
		1854 (L) x 1192 (W) x 2050 (H) mm (with package)
N.W.		235 kg
G.W.		580 kg
Optional Item	Rotary Table (Ø 650 mm, 2 station)	
	Screen Frame Module	
	MultiFOCUS	
	Air Extraction System	

* Please visit www.GCCworld.com for more detail.
Δ Specifications are subject to change without prior notice.



Laser Marker

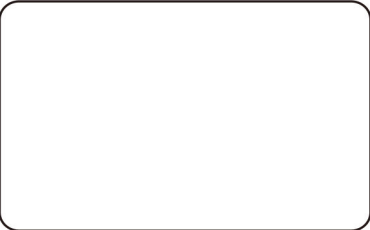
GCC LaserPro

LFC II Workstation

Industrial Laser Marking Workstation
Design with Your Safety and Convenience in Mind



Authorized Dealer



www.GCCworld.com

- Class 1 (EN60825-1) safety workstation
- Sturdy and rigid steel chassis to meet industrial requirement
- Various configurations: Standard Table, Rotary Table
- Compatible for all GCC LaserPro StellarMark C & IF Series laser markers
- Large working space to load max. 300 (H) x 300 (W) x 380 (L) mm work pieces
- Large protection window for easy working process monitoring
- Internal LED lighting illuminates the working space



GCC Headquarters	4F-1., No.236, Fude 2nd Rd., Xizhi Dist., New Taipei City 22151, Taiwan	886-2-6616-6692	Fax : 886-2-2694-6875
GCC China	No.1, Chen Feng Road, Yushan, Kunshan, Jiangsu 215300, China	86-512-5726-1515	Fax : 86-512-5726-1518
GCC Europe B.V.	Eglantierbaan 43-45, 2908 LV, Capelle a/d IJssel, The Netherlands	31-10-458-9367	
GCC America, Inc	20453 E Valley Blvd. Walnut, CA 91789, USA	1-909-718-0248	Fax : 1-909-718-0251
		US & Canada Only	Toll Free: 1-888-284-5211



Laser Marker

GCC LaserPro LFC II Workstation



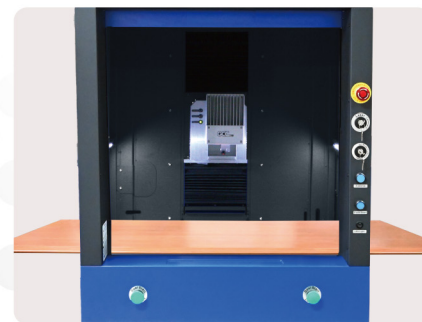
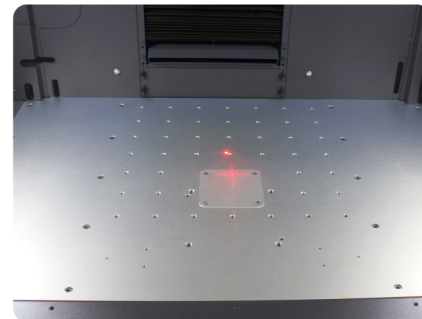
Industrial Solution

LFC II Workstation integrates various processing modes and exclusive accessories to meet customers' need. 700 x 400 mm working table is able to place large objects and setup fixtures effortlessly.

LFC II Workstation is considered a class 1 (EN60825-1) device to ensure user safe and sound is the best industrial solution.

Standard Table

Standard table with matrix M6 circular slots for fixture mounting, working objects setup is more than easy.



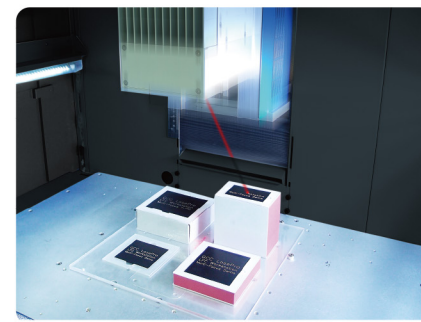
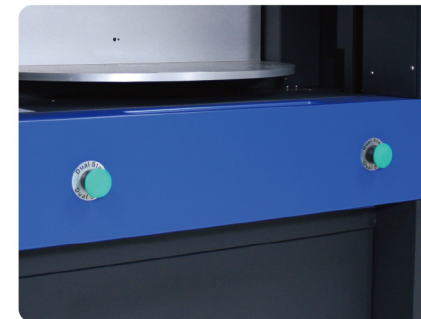
Pass-Through Door

The left and right pass-through doors can be further removed to place long objects or allow external setup conveyor to feed in materials for laser marking on fly.

* When the right door and left door are open, machine becomes a Class 4 equipment and users must wear goggles to operate the machine.

Dual Start Button

Advanced secure protection by simultaneously pushing the Dual Start buttons to fire laser.

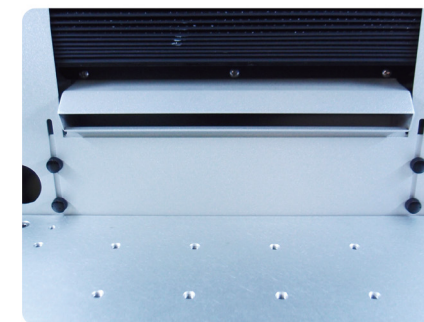


MultiFOCUS (Optional)

MultiFOCUS function allows to define multiple focus distances according to different height of working objects at once, the Z axis will automatically move to correct position to deliver precise laser marking jobs. Laser marking on different height working surface in one shot now is possible.

Emergency Stop

Big red button located on the right of machine allows operators to stop the laser and AC power immediately to provide highly safety operation.



Clean Work Area

Integrated vacuum pipe for extraction particles created during laser processing.

Automatic Safety Door

Automatically controlled front door open and close to secure safety operation.



Key Switch

Key Switch manages different authority levels between Service Mode and Operator Mode to restrict unauthorized access to the production setups.