

Application Manual

PAINT PROTECTION FILM

Transparent films which offer **optimum protection**



PPF

PVC Film

- 110-240 Microns
- Suitable for partial wraps
- Dry or wet applications

TPU Film

- 100-200 Microns
- Suitable for full wraps
- Wet applications

Self-healing Film

- 150 Microns
- Suitable for full/partial wraps
- Wet applications

Tel: 01827 300500

Web: www.grafityp.co.uk

GRAFITYP
UK Limited

Application Manual - PPF

What are Protection Films?



Grafityp's high-performance paint protections films add a unseen protection layer against stone chips and scratches when applied to the most vulnerable parts of your vehicle by forming an invisible shield.

Available in transparent gloss, matt and black plus a range of options including self-healing.

Preparation

Before you start applying the protection films, make sure that:

- The object is suited to be protected by this type of film.
- How deep are the deformations?
- The surface is suited (no slightly structured plastic bumpers)
- The environment is suited for executing the job
- You have all necessary tools at hand



The ideal environment for wrapping a vehicle is a well illuminated, dust-free environment with a constant temperature between 17 and 24°C.

ATTENTION!

A car must still have its original paint. If it doesn't, the new lacquer layers must have had at least 6 weeks to cure before you apply any vinyl on it.

Furthermore, the vinyl should have acclimatised sufficiently. We also advise you to remove unnecessary car parts before wrapping the car, like e.g. number plates, antennas, window rubbers, mirrors, etc...

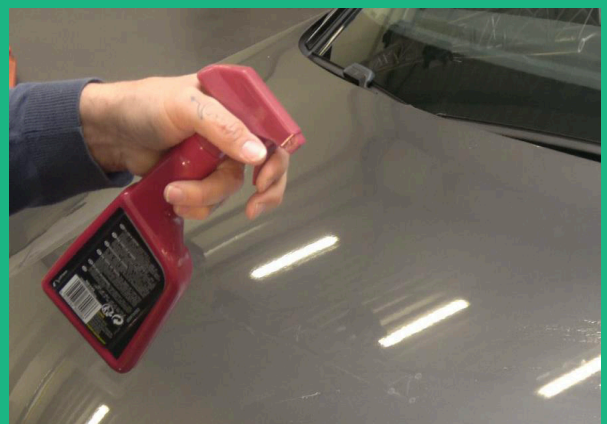
GrafiGuard TPU Film

Tools:

- A squeegee with a micro-fiber top layer
- A rubber squeegee
- A flexible undamaged Teflon squeegee
- A very sharp knife/blade
- A heat gun with adjustable air pressure and temperature
- A non-aggressive degreasing agent and/or silicone remover
- Micro-fiber cleaning cloths
- A spray bottle with a TACK SOLUTION (Isopropanol 10%, Demineralised water 90%)
- A spray bottle with a SLIP SOLUTION (Demineralised water 1L and baby shampoo 10 drops)

Clean the vehicle thoroughly - the protective layer is transparent, any remaining dirt on the vehicle will be visible afterwards.

The first step is to use an insect remover, followed by claying and a good wax free polish. Then make sure you degrease the vehicle thoroughly with isopropanol, ethanol or surface cleaner. Make sure you don't forget the locations that are a bit harder to reach, such as the split between two car parts. If necessary, use cotton buds or wrap a piece of thin cleaning cloth around a squeegee. Make sure you remove all silicones from the car body – don't just wipe them to the edges.



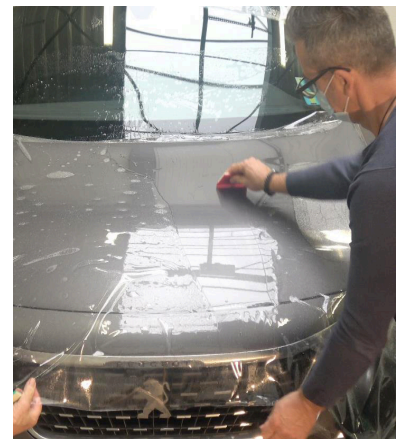
Applying GrafiGuard TPU Film

GG10 - GG15 - GG20 - GGSHG15 - GGSHM15 - GGSHBG15

These films are ALWAYS applied WET.

It is important to rub the film everywhere, so the fluid between the car body and the film is completely removed.

1. Cut a piece of film from the roll, which is big enough to completely cover the car part to be wrapped.
2. Position the piece of film on the car part and mark its position.
3. Make sure your hands are perfectly clean. Use slip solution to soak your hands to avoid leaving any fingerprints behind on the adhesive layer.
4. Lay the film upside down on a table, remove the backing liner and spray a large amount of slip solution on the adhesive layer.
5. Spray a large amount of slip solution on the car body as well.
6. Place the film as even as possible on the car body.
7. Now remove the transparent protective layer that is still on the film, pulling it away at less than an 180 ° angle.
8. Make the upper side of the film wet with the slip solution. This will make it a lot easier to smooth down the film with the squeegee.
9. Start rubbing in the middle of the film. Always rub in the direction of the nearest edge, making sure that the slip solution mixture can always be moved to the sides. Avoid air and/or water bubbles, as it is hard to remove them afterwards.
10. The film may not stick well on strongly deformed car parts. If this happens, gently remove the film from those locations, and spray the car body and adhesive layer with tack solution. Rub the film again, keeping the upper layer of the film wet with slip solution.



Applying GrafiGuard TPU Film

GG10 - GG15 - GG20 - GGSHG15 - GGSHM15 - GGSHBG15

11. A heat gun is only used if the film needs to be deformed considerably, at certain locations and at the edges. Never deform the films for more than 15% of the total coverage. The TPU films require a lower temperature than PVC films. The heat gun should be set at 250 °C for detailed features, 350 °C for deformations over larger surfaces. This will heat the film to a maximum of 60 °C.
12. All excess material can now be cut off, with a very sharp knife or blade. If possible, fold the film around the edges. This will make the edges of the film on the car body invisible.
13. Depending on the colour of the background, GrafiGuard GG10, GG15 and GG20 may not look crystal clear. However, the transparency will return after a couple of days, when the adhesive has reached its final adhesive strength.
14. Leave the car inside for at least one more night, to perform a thorough check the following day.



Maintenance and cleaning:

- Wait for at least 72 hours before washing the car.
- After the period of time, you can maintain the car in the usual way with a good car shampoo.
- Using strong chemical products, such as isopropanos or citrus cleaner, to remove tar spots, insects, etc. They can damage the films. Always use mineral-based cleaning agents. Test the products on an unused piece of film first.
- Waxing is optional. Don't do this mechanically. Preferably use a polymeric-based fluent wax. This won't leave traces of wax behind at the edges.

Removing the film:

- Never remove the film without heating it first with a heat gun. Heat the car body to a temperature of around 50 °C.
- Pull the film off under an angle of around 135 ° to 180 ° to avoid leaving traces of adhesive behind.

Application Manual - PPF

GrafiGuard PVC Film

P110G - P110M - SCP01 - SCP02 - SCP15

Tools:

- A squeegee with a felt strip at one side
- A very sharp knife/blade
- A heat gun with adjustable air pressure and temperature
- Soft, fluff-free gloves
- Non-aggressive degreasing agent and/or silicone remover, isopropanol, ethanol or "Rapid Prep"
- Cleaning cloths

Cleaning and degreasing the vehicle:

The vehicle or object should be cleaned a day before wrapping (without using wax). The vehicle must be completely dry before the film is applied.

We suggest using isopropanol, ethanol or surface cleaner for degreasing the vehicle properly. Pay special attention to the deep recesses. Using a tissue to wipe over a small area and then discarded, will prevent silicones from being moved around. Make sure to check the 'hidden' and hard to reach areas, such as the backside of the wheel housing.

Applying GrafiGuard PVC Film

P110G - P110M - SCP01 - SCP02 - SCP15

Small pieces:

They can be applied in exactly the same way as the TPU film. Application with slip solution gives the nicest result.

Slightly deformed surfaces:

The bonnet of this car is deformed only slightly. It can be protected with SCP01 or SCP02 in one piece. In this case the film can be applied wet as well as dry.



In case of dry wrapping, it is easier to fold the film around the edges afterwards. When dry wrapping, you may see some rubbing stripes in the glue afterwards. These stripes will automatically disappear after some time.

In case of wet wrapping, the chance of air bubbles getting entrapped or rubbing stripes appearing in the glue becomes a lot smaller.

However, this method is only advisable if the part to be wrapped does not or hardly show any deformation. It will also take longer for the film to reach its final adhesive strength.

Strongly deformed surfaces:

The bumper of this car is strongly deformed and can not be wrapped in one piece with SCP films.

SCP and P110 are polymeric calendered films and can not be deformed in the same way as a TPU film. Therefore, the bumper is divided into several parts, which are wrapped separately.

