

# Grafix PS Electric Textile Film



## Special Effect Films

Cad Cut® material suitable for 100% cotton, 100% polyester, poly-cotton blends and most synthetic fabrics (except nylon).

Adhesive Polyester backing.

## Application Instructions

- 1) **Cut in REVERSE**
- 2) **Heat apply with its own polyester backing**
- 3) **Remove polyester backing while HOT**

Due to the many different base materials available on the market, the following heat transfer instructions are given as guideline only:

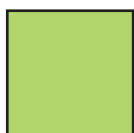
**Temperature: 155°C**  
**Pressure: Low**

**Time: 15 sec.**  
**Washable to: 50°C**

## Colours



Electric Blue



Electric Lime



Electric Purple



Electric Red



Electric Pink



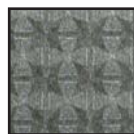
Electric Yellow



Electric Olive



Electric Orange



Electric Lens

These colours are given as indication. Please refer to the samples to check the exact colours

**GRAFITYP**

Grafitack House, 103 Mariner, Lichfield Rd,  
Industrial Est., Tamworth, Staffs, B79 7UL

**01827 300500**

Fax: 01827 51333 | E-mail: [sales@grafityp.co.uk](mailto:sales@grafityp.co.uk) | [www.grafityp.co.uk](http://www.grafityp.co.uk)